

Ordering Collection Supplies for COVID-19 caused by SARS-CoV-2, Test Order 2019-nCoV RT-PCR

Geisinger Diagnostic Medicine Institute (DMI), Laboratory Medicine: Obtaining Laboratory Supplies for Specimen Collection

Supplies

You need Specimen Collection Supplies:

1. Swabs, NP x2 (thin) and OP x1 (thick)
2. Universal Transport Media (UTM) x3
3. Sterile cup or aspiration trap x1
4. Biohazard transport bags x2 (double bag)

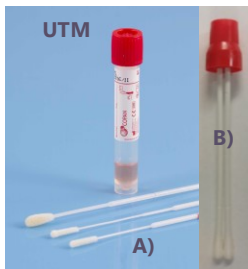
When it's time to order supplies for COVID-19 testing...
(Test Code is "2019-nCoV RT-PCR")

You need "Paperwork"

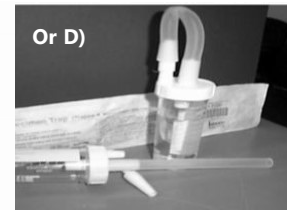
*Link to PUI form = <https://www.cdc.gov/coronavirus/2019-ncov/downloads/pui-form.pdf>

<https://www.geisingermedicallabs.com/MicroApp/index.shtml>

Devices per PUI



1. ORDER URT specimens for EACH PUI (Ship 2-8° C)
 - A) NP swab x2 and UTM x2 (1 for GML; 1 for DOH)
 - B) OP (Throat) x1 and UTM x1 (Use the RED GML molecular swab and place it into RED-top UTM (break of the stick so the cap seals tightly))
2. ORDER (LRT specimens for EACH PUI (Ship Rm. Temp.
 - C) Sterile Specimen Container, Sputum
 - or
 - D) Aspiration Device, Respiratory Aspirate

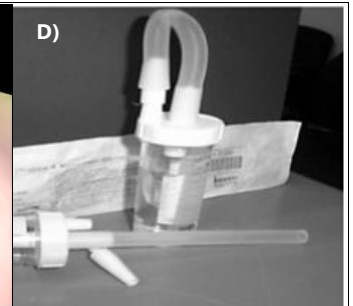
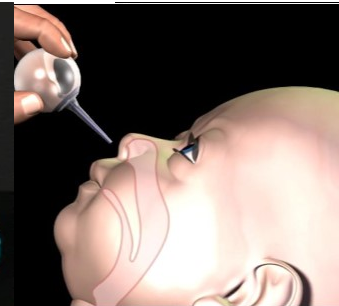
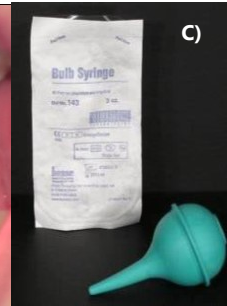
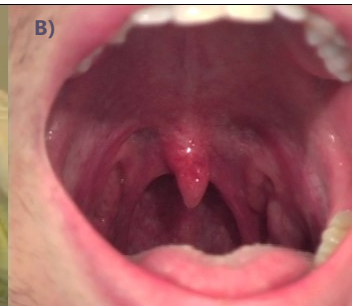


Hospitals: Order via the normal supply process
Clinics: Order via your normal supply process

For urgent collections supply needs, or questions, GLM Laboratory Client Services
Phone 570-271-6326

Collection Tips

- A) Thin swab is for NP
- B) Thick swab is for throat
- C) Syringe or nasal cannula can be used for babies to collect an NP aspirate
- D) Tracheal aspirate container is for bronch lavages or other LRT aspirates

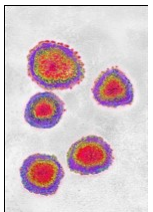


Collection Process

ORDER TESTS: Collect Patient Data and Specimens.

1. Complete the Patient Under Investigation (PUI) Form*
2. Collect a) Two NP swabs in UTM, b) One OP swab in UTM, and c) an LRT specimen(s) in sterile screw-cap collection device, i.e., 2-3 mL of BAL, tracheal aspirate, or expectorated (deep-cough) sputum collected after mouth is rinsed with water.
4. Call PADOH, 1-(877) 724-3258 (PAHEALTH) for PUI case review*.
5. IF approved by PADOH and a CDC nCOV-ID number is assigned, transport samples at refrigerated temp. (2-8 ° C) in one bag.

GML DMI test order = 2019-nCoV RT-PCR), available beginning 3/9/2020



<https://www.geisingermedicallabs.com/MicroApp/index.shtml>

Created dmw, 3/3/2020 based on new PADOH/CDC/Geisinger guidance

Specimen collection Guides:

PADOH: <https://www.health.pa.gov/topics/Documents/HAN/2019nCoVSpecimenInstructions.pdf>
GLM Laboratory Test Catalogue: <https://www.geisingermedicallabs.com/MicroApp/index.shtml>

LEGEND

CDC = Centers for Disease Control and Prevention
DMI = Diagnostic Medicine Institute
GLM = Geisinger Laboratory Medicine
PADOH = PA Department of Health
PUI = Patient Under Investigation

SPECIMEN LEGEND

BAL = bronchoalveolar lavage
LRT = Lower Respiratory Tract specimen
NP = nasopharyngeal swab
OP = oropharyngeal swab (throat)
UTM = universal transport media