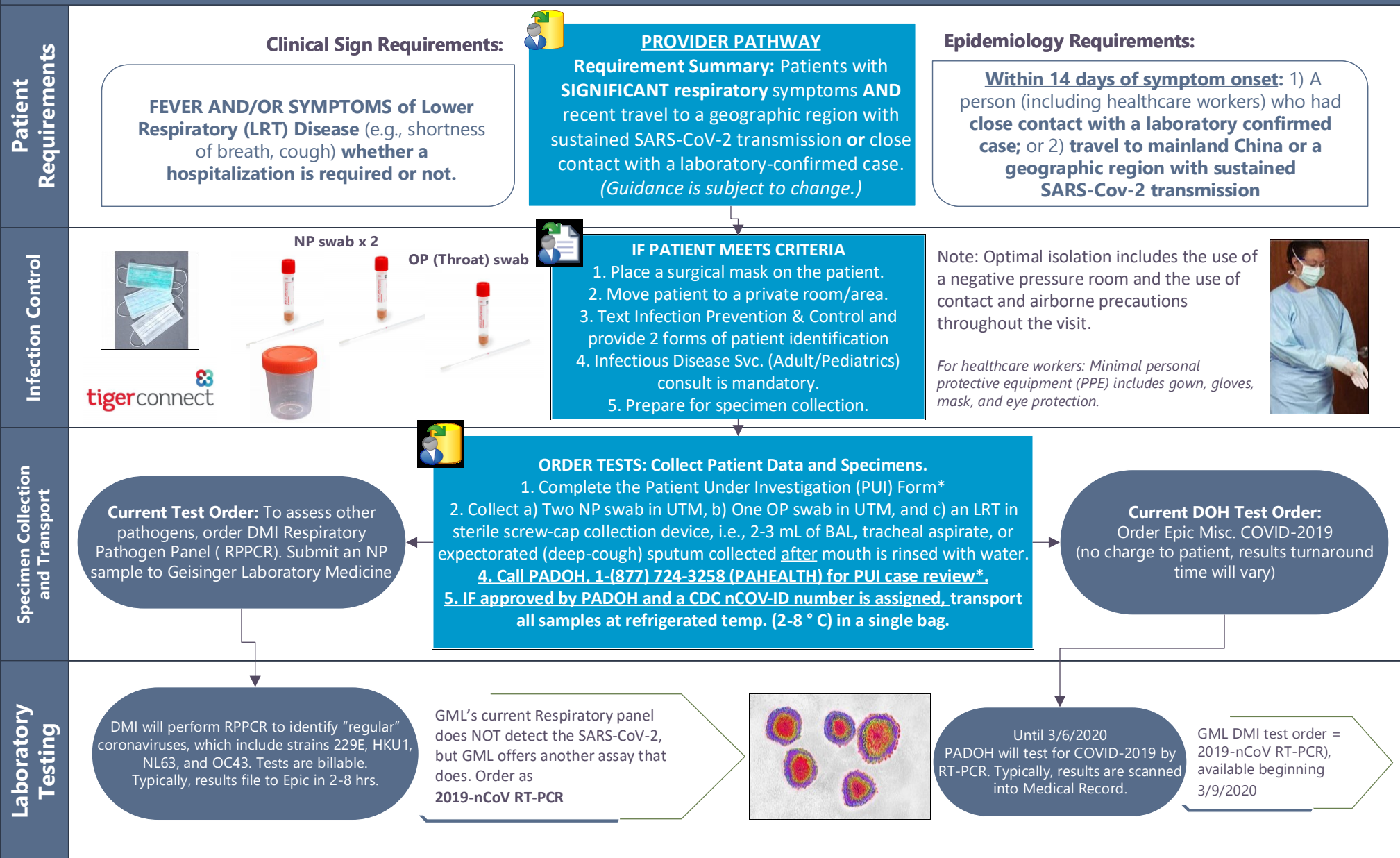


Submitting Specimens for 2019-novel coronavirus testing (COVID-2019/SARS-CoV-2), Order 2019-nCoV RT-PCR

Geisinger Diagnostic Medicine Institute (DMI), Laboratory Medicine: Process for Test Ordering, Specimen Collection and Transport



dmw 02/10/2020, updated dmw, 3/3/2020 based on new PADOH/CDC guidance

***Link to PUI form** = <https://www.cdc.gov/coronavirus/2019-ncov/downloads/pui-form.pdf>

Specimen collection Guides:

PADOH: <https://www.health.pa.gov/topics/Documents/HAN/2019nCoVSpecimenInstructions.pdf>

GLM Laboratory Test Catalogue: <https://www.geisingermedicallabs.com/MicroApp/index.shtml>

LEGEND

CDC = Centers for Disease Control and Prevention

DMI = Diagnostic Medicine Institute

GLM = Geisinger Laboratory Medicine

PADOH = PA Department. of Health

PUI = Patient Under Investigation

SPECIMEN LEGEND

BAL = bronchoalveolar lavage

LRT = Lower Respiratory Tract specimen

NP = nasopharyngeal swab

OP = oropharyngeal swab (throat)